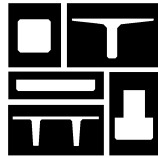
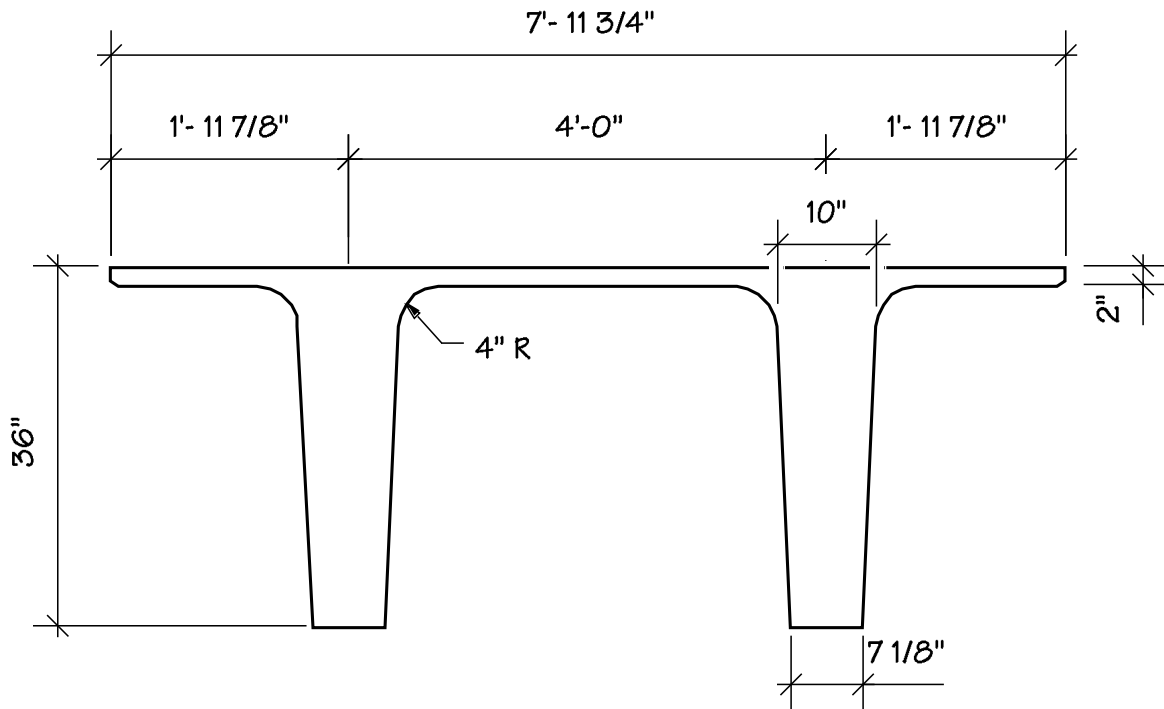


PRESTRESSED CONCRETE, INC.



P.O. Box 311 • Newton, KS 67114
316-283-2277 • 316-283-2321(fax)

8'- 0" DOUBLE TEE
36" DEEP



SECTION PROPERTIES

Wt. = 832 plf (667 plf)
A = 799 in²
Yt = 13.65 in
Yb = 22.35 in
Sb = 4,466 in³
St = 7,310 in³
I = 99,807 in⁴