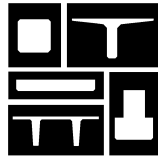
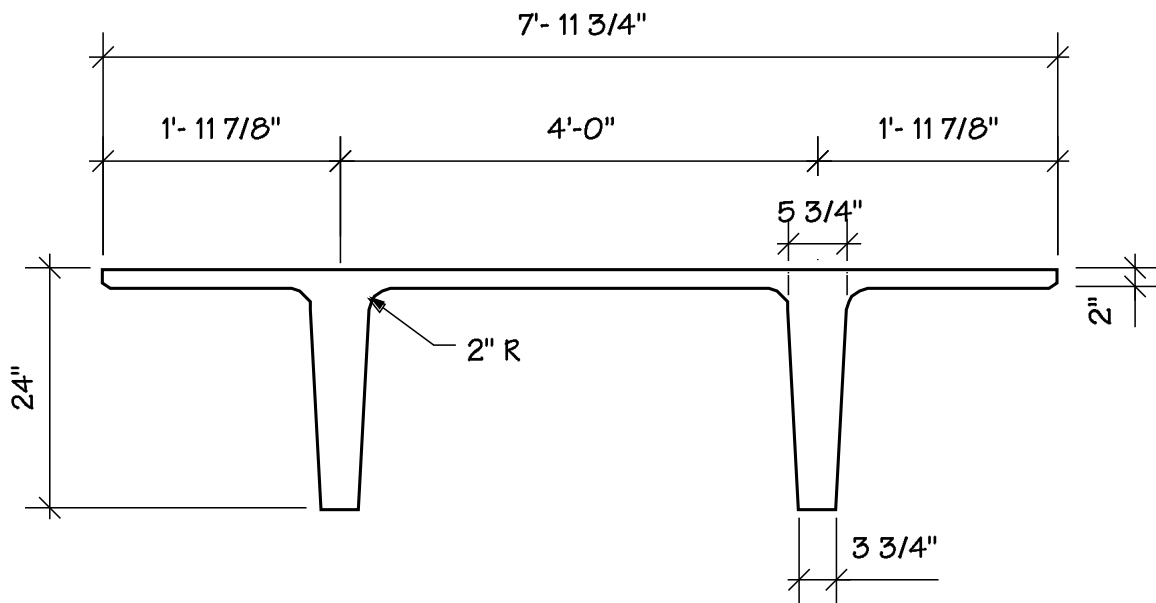


PRESTRESSED CONCRETE, INC.



P.O. Box 311 • Newton, KS 67114
316-283-2277 • 316-283-2321(fax)

8'- 0" DOUBLE TEE
24" DEEP



SECTION PROPERTIES

Wt. = 418 plf (334 plf)
A = 401 in²
Yt = 6.85 in
Yb = 17.15 in
Sb = 1,224 in³
St = 3,064 in³
I = 20,985 in⁴